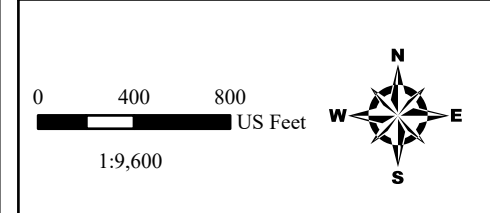
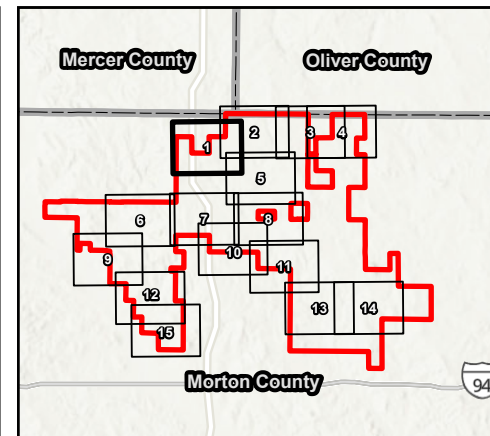
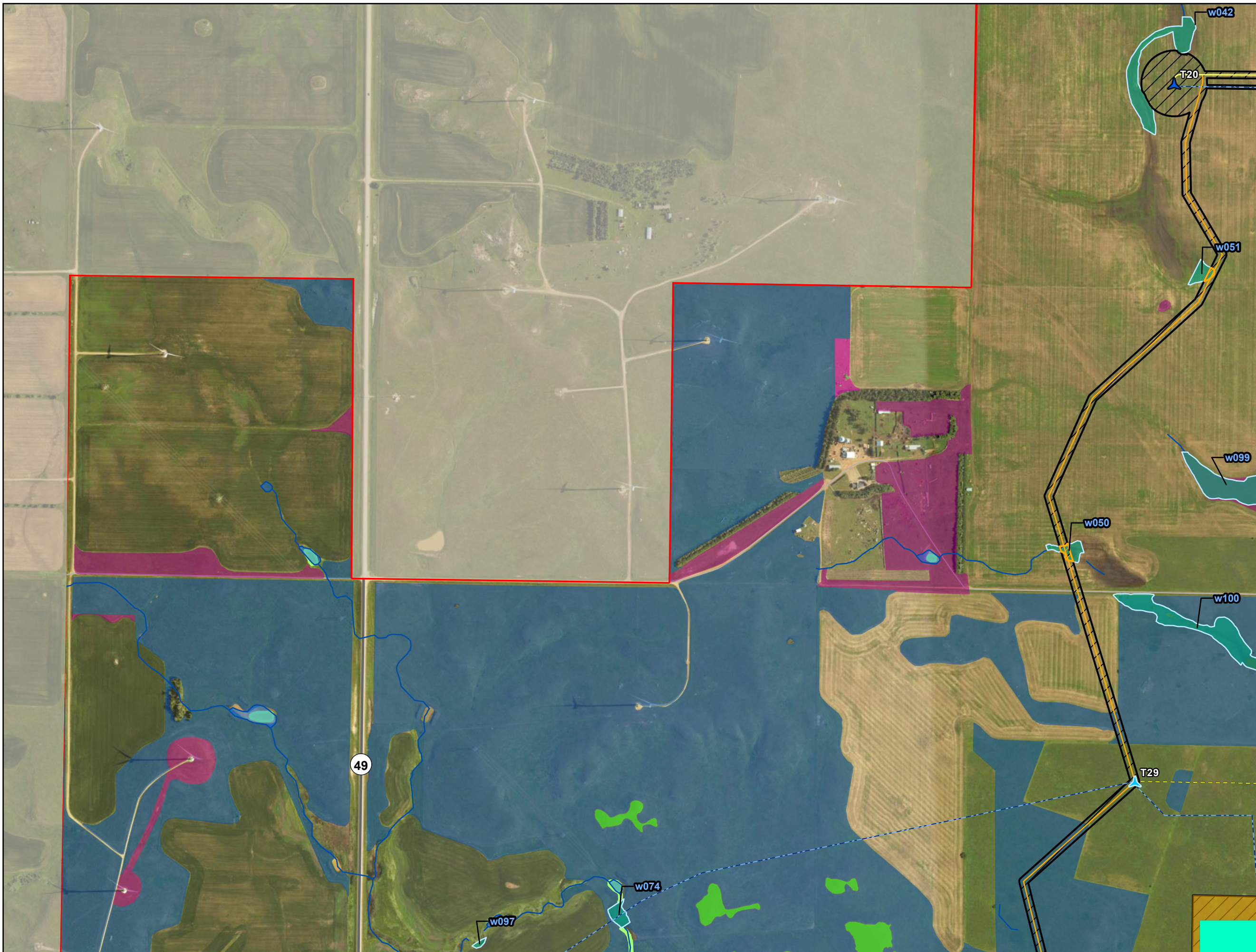




AN ALLETE COMPANY

Attachment N

Wetland Avoidance Area Map



- Project Area
- Construction Easement
- Substation Yard
- Substation Facility
- ▲ Primary Turbine
- ▲ Alternate Turbine
- Primary Access Road
- - - Alternate Access Road
- Primary Crane Path
- Collection Line
- DASK Habitat
- County Boundary
- Wetlands/Waterbodies**
- Delineated Waterway
- Delineated Wetland
- NHD Waterbody
- NHD Waterway
- NWI Wetland
- Wetland Impact**
- Temporary
- Grassland Sod Type**
- Broken Grassland
- Broken Grassland (Desktop)
- Unbroken Grassland

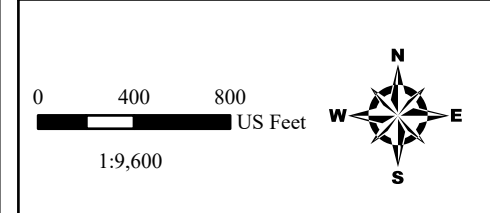
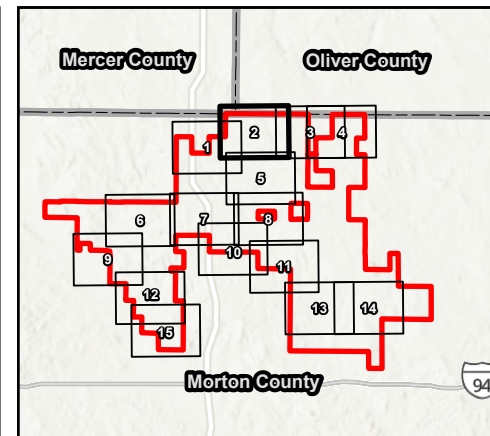
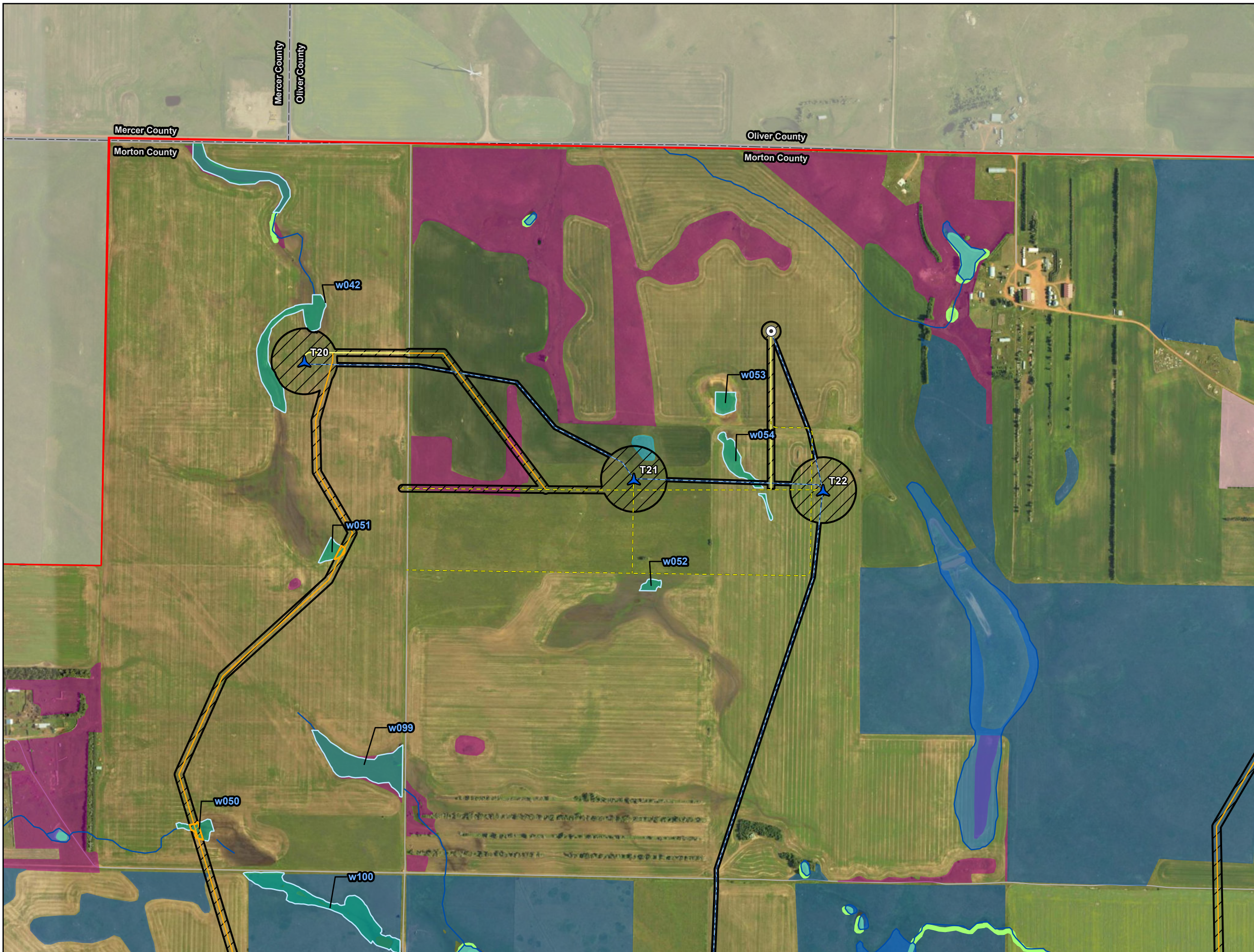
Wetlands/Waterbodies
Longspur Wind Energy Center
 Morton County, North Dakota

Page 1 of 15

merjent.

For Environmental Review Purposes Only

Date: (5/4/2026) Source: Z:\Clients\W_P\W\Power\Longspur_Wind\ArcGIS\Permitting\PS\CIPSC_Testsimony\Longspur_Wind_PSC_Testsimony.aprx



- Project Area
- Construction Easement
- ▲ Primary Turbine
- ⊙ Met Tower
- Primary Access Road
- Alternate Access Road
- Primary Crane Path
- ~ Collection Line
- DASK Habitat
- County Boundary
- Wetlands/Waterbodies**
- Delineated Waterway
- Delineated Wetland
- NHD Waterbody
- NHD Waterway
- NWI Wetland
- Wetland Impact**
- Temporary
- Grassland Sod Type**
- Broken Grassland
- Broken Grassland (Previous Survey)
- Unbroken Grassland
- Unbroken Grassland (Desktop)

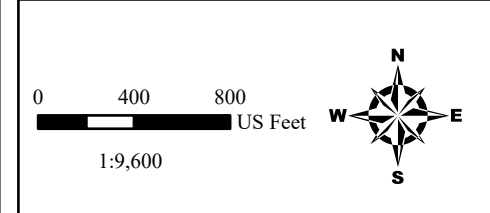
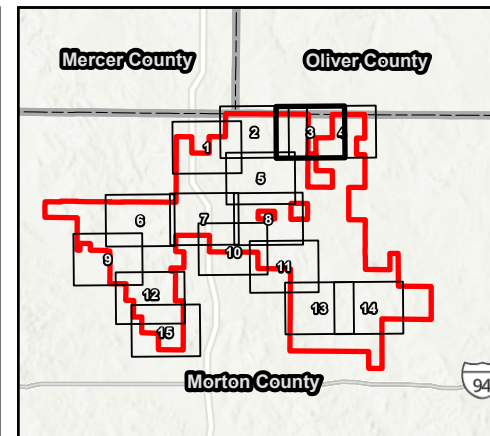
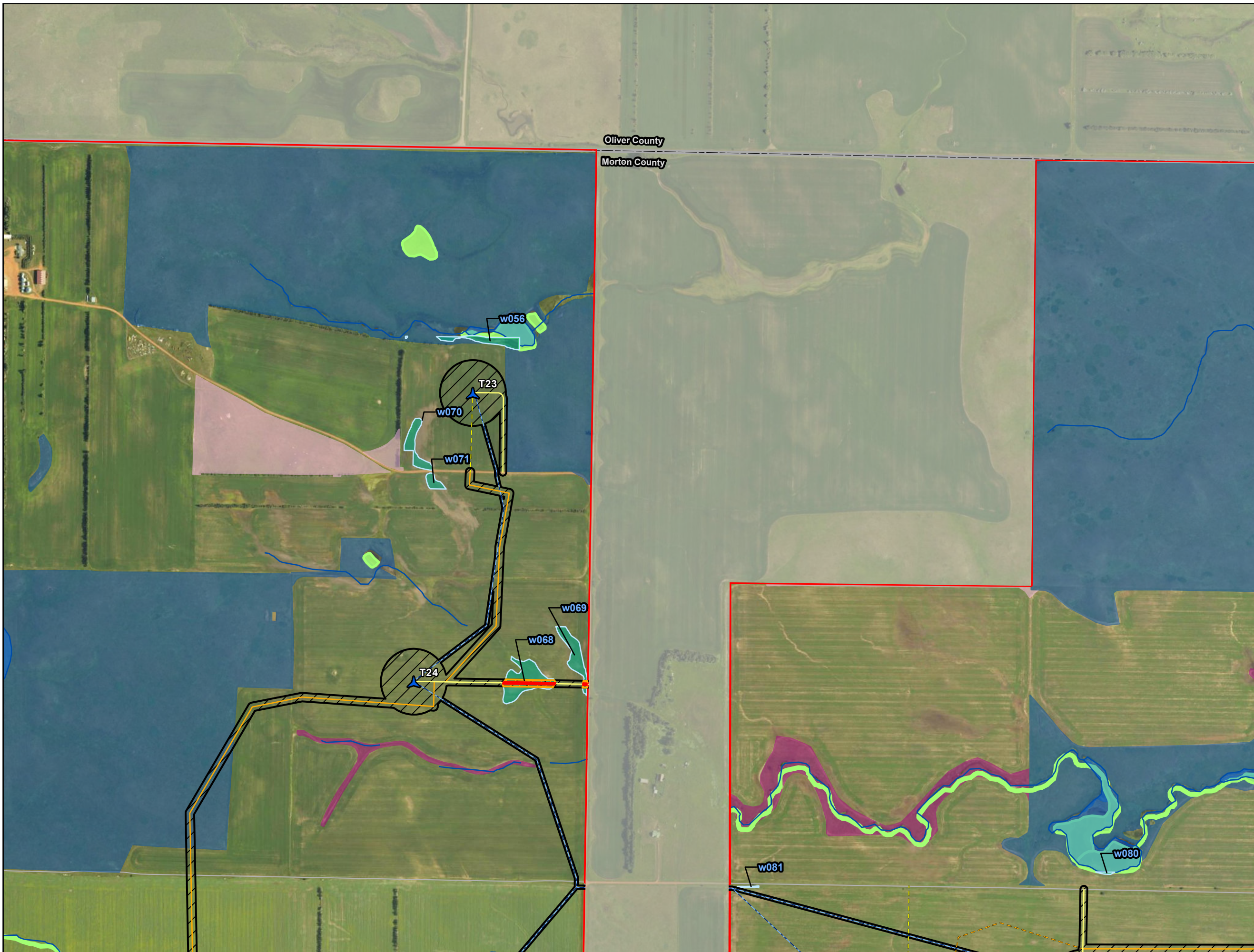
Wetlands/Waterbodies
Longspur Wind Energy Center
 Morton County, North Dakota

Page 2 of 15

merjent.

For Environmental Review Purposes Only

Date: (5/4/2026) Source: Z:\Clients\W_P\W\Power\Longspur_Wind\ArcGIS\Permitting\PS\CIPSC_Testimony\Longspur_Wind_PSC_Testimony.aprx



- Project Area
 - Construction Easement
 - ▲ Primary Turbine
 - Primary Access Road
 - Alternate Access Road
 - Primary Crane Path
 - Alternate Crane Path
 - Collection Line
 - DASK Habitat
 - County Boundary
- Wetlands/Waterbodies**
- Delineated Waterway
 - Delineated Wetland
 - NHD Waterbody
 - NHD Waterway
 - NWI Wetland
- Wetland Impact**
- Temporary
 - Permanent
- Grassland Sod Type**
- Broken Grassland
 - Broken Grassland (Previous Survey)
 - Unbroken Grassland

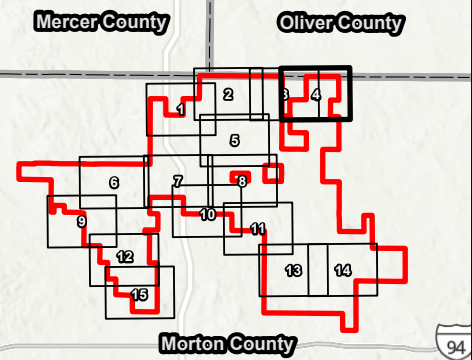
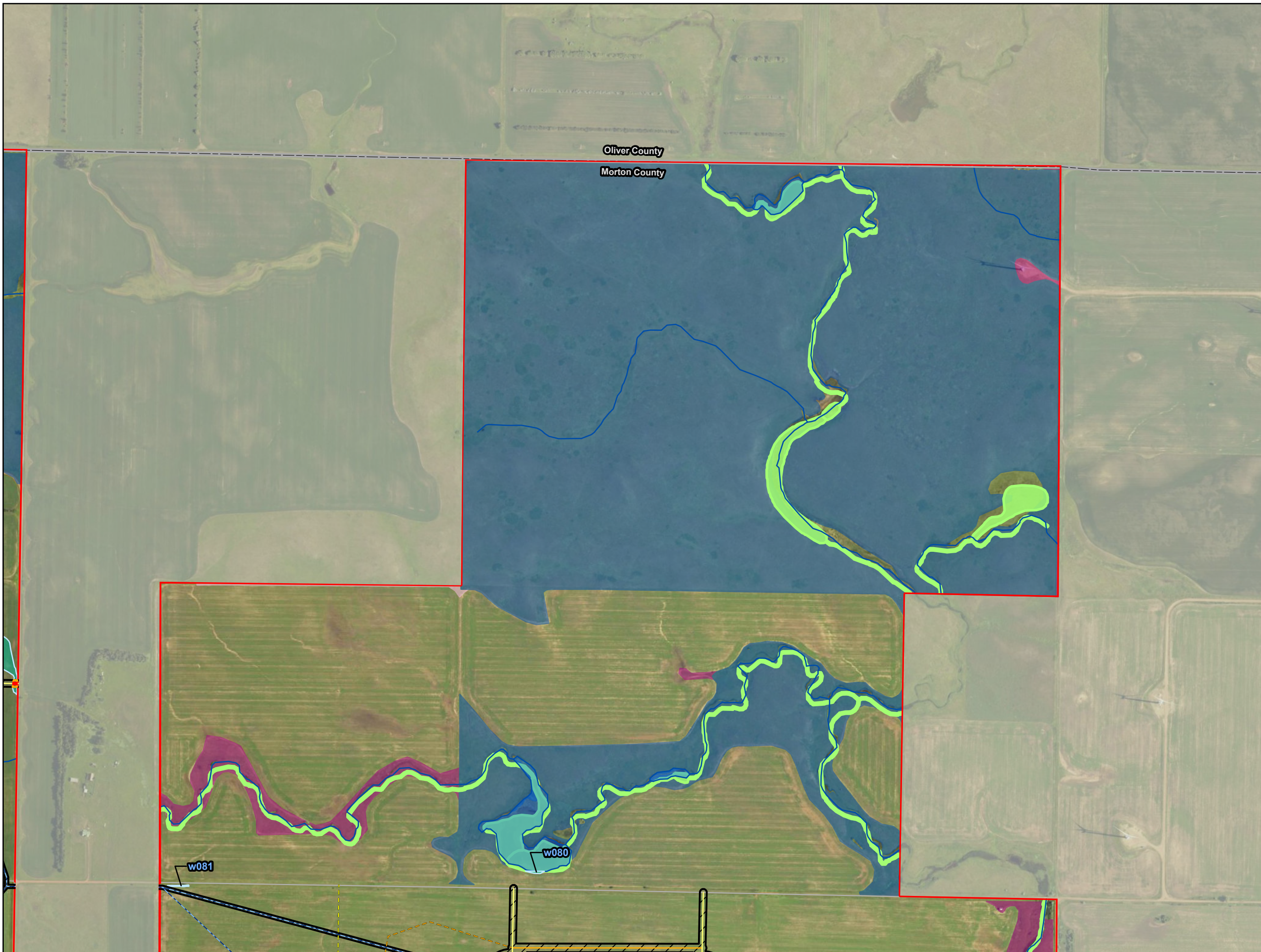
Wetlands/Waterbodies
Longspur Wind Energy Center
 Morton County, North Dakota

Page 3 of 15

merjent

For Environmental Review Purposes Only

Date: (5/4/2026) Source: Z:\Clients\W_P\W\Power\Longspur_Wind\ArcGIS\Permitting\PS\CIPSC_Testimony\Longspur_Wind_PSC_Testimony.aprx



- Project Area
 - Construction Easement
 - Primary Access Road
 - Alternate Access Road
 - Primary Crane Path
 - Alternate Crane Path
 - Collection Line
 - DASK Habitat
 - County Boundary
- Wetlands/Waterbodies**
- Delineated Waterway
 - Delineated Wetland
 - NHD Waterbody
 - NHD Waterway
 - NWI Wetland
- Wetland Impact**
- Temporary
 - Permanent
- Grassland Sod Type**
- Broken Grassland
 - Broken Grassland (Previous Survey)
 - Unbroken Grassland

Wetlands/Waterbodies

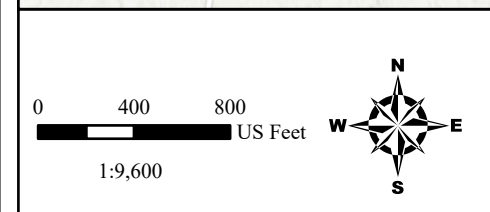
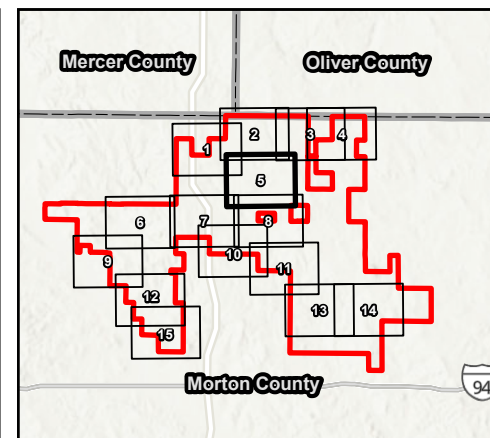
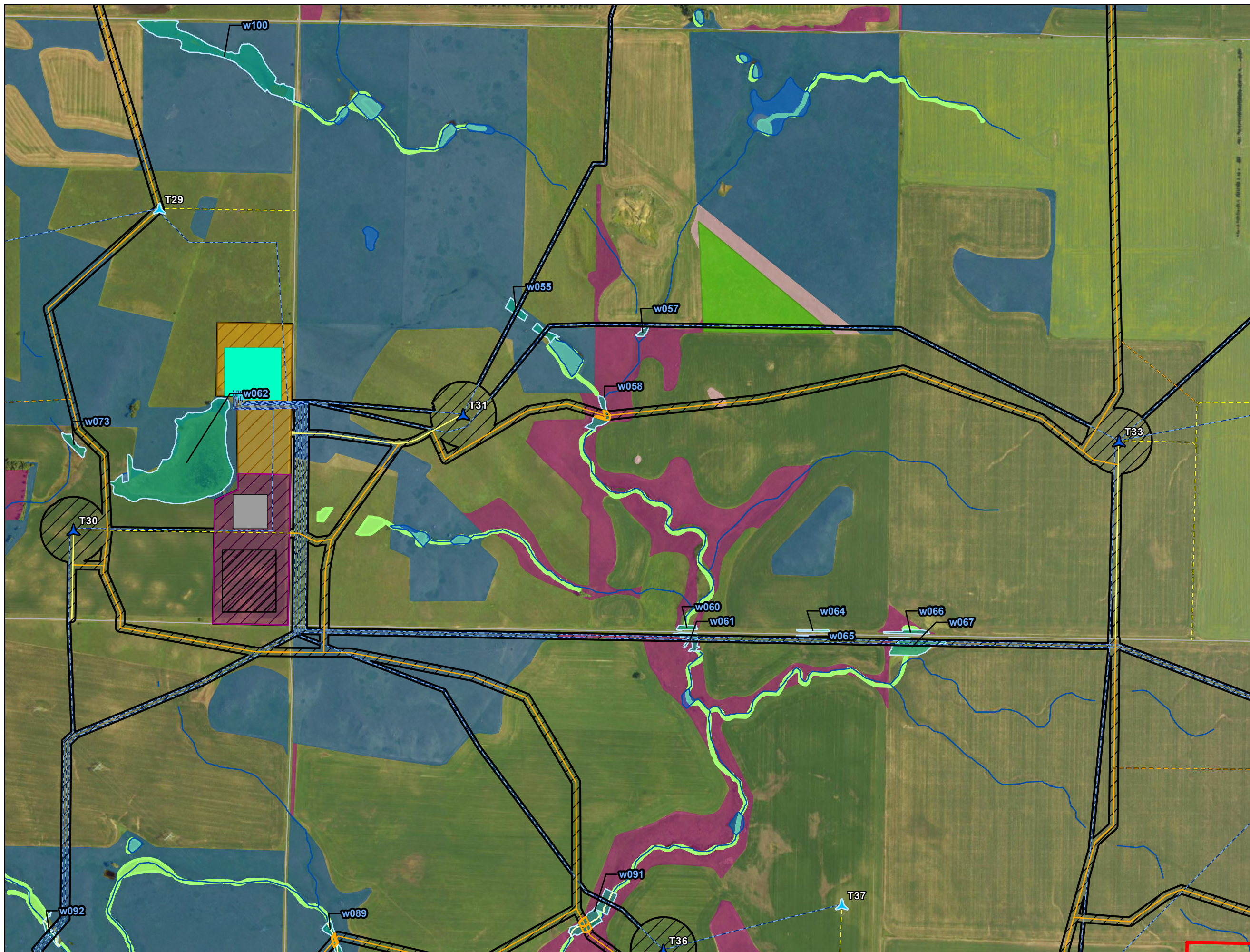
Longspur Wind Energy Center

Morton County, North Dakota

Page 4 of 15



Date: (5/4/2026) Source: Z:\Clients\W_P\W\Power\Longspur_Wind\ArcGIS\Permitting\PS\CIPSC_Testimony\Longspur_Wind_PSC_Testimony.aprx



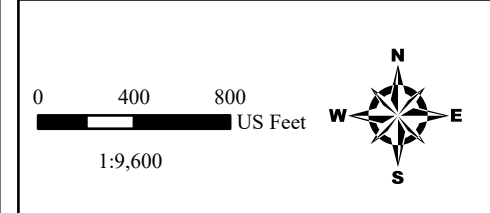
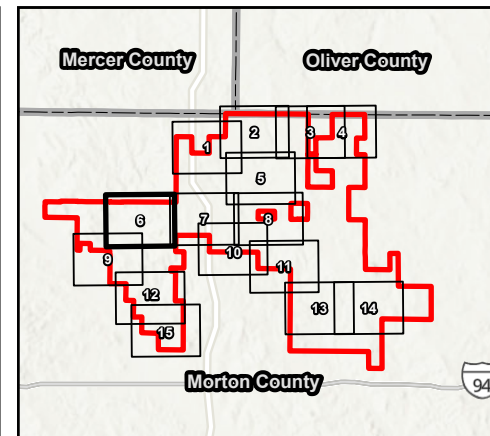
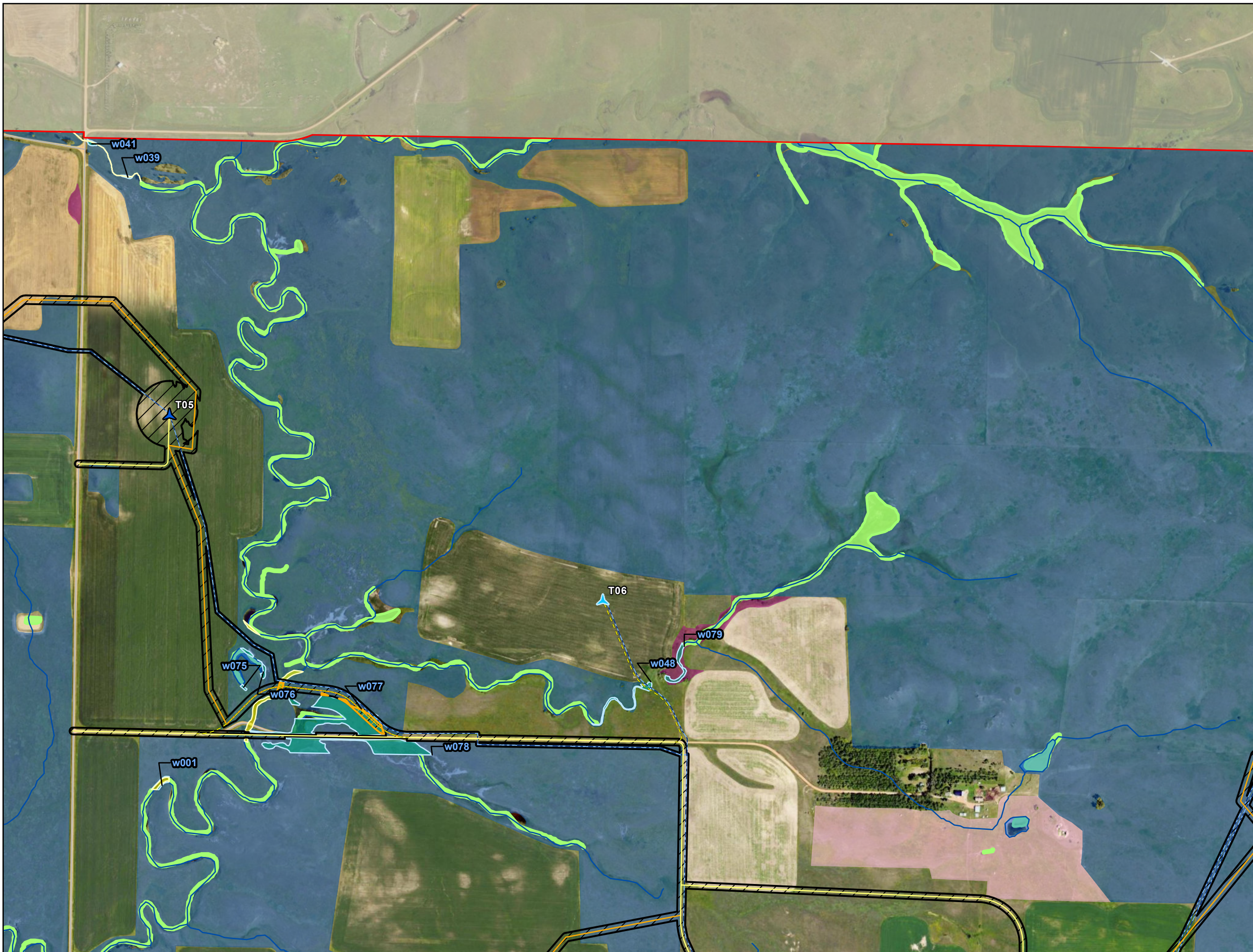
- Project Area
- Construction Easement
- Substation Yard
- Substation Facility
- O&M Yard
- O&M Building
- Construction Laydown Yard
- Primary Turbine
- Alternate Turbine
- Primary Access Road
- Alternate Access Road
- Primary Crane Path
- Alternate Crane Path
- Collection Line
- County Boundary
- Wetlands/Waterbodies**
- Delineated Waterway
- Delineated Wetland
- NHD Waterbody
- NHD Waterway
- NWI Wetland
- Wetland Impact**
- Temporary
- Waterbody Impact
- Temporary
- Grassland Sod Type**
- Broken Grassland
- Broken Grassland (Previous Survey)
- Unbroken Grassland
- Unbroken Grassland (Previous Survey)

Wetlands/Waterbodies
Longspur Wind Energy Center
 Morton County, North Dakota

Page 5 of 15

For Environmental Review Purposes Only

Date: (5/4/2026) Source: Z:\Clients\W_P\W\Power\Longspur_Wind\ArcGIS\Permitting\PS\CIPSC_Testimony\Longspur_Wind_PSC_Testimony.aprx



- ▭ Project Area
- Construction Easement
- ▲ Primary Turbine
- ▲ Alternate Turbine
- Primary Access Road
- Alternate Access Road
- Primary Crane Path
- Collection Line
- ▭ DASK Habitat
- County Boundary
- Wetlands/Waterbodies**
- Delineated Waterway
- Delineated Wetland
- NHD Waterbody
- NHD Waterway
- NWI Wetland
- Wetland Impact**
- Temporary Waterbody Impact
- Temporary Wetland Impact
- Grassland Sod Type**
- ▭ Broken Grassland
- ▭ Broken Grassland (Previous Survey)
- ▭ Unbroken Grassland
- ▭ Unbroken Grassland (Desktop)

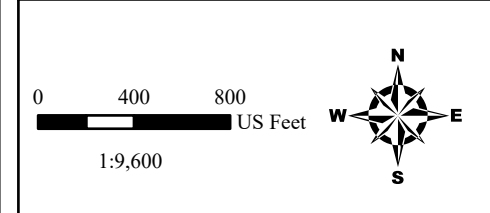
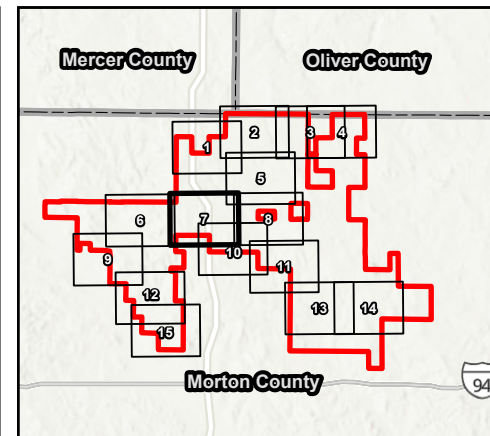
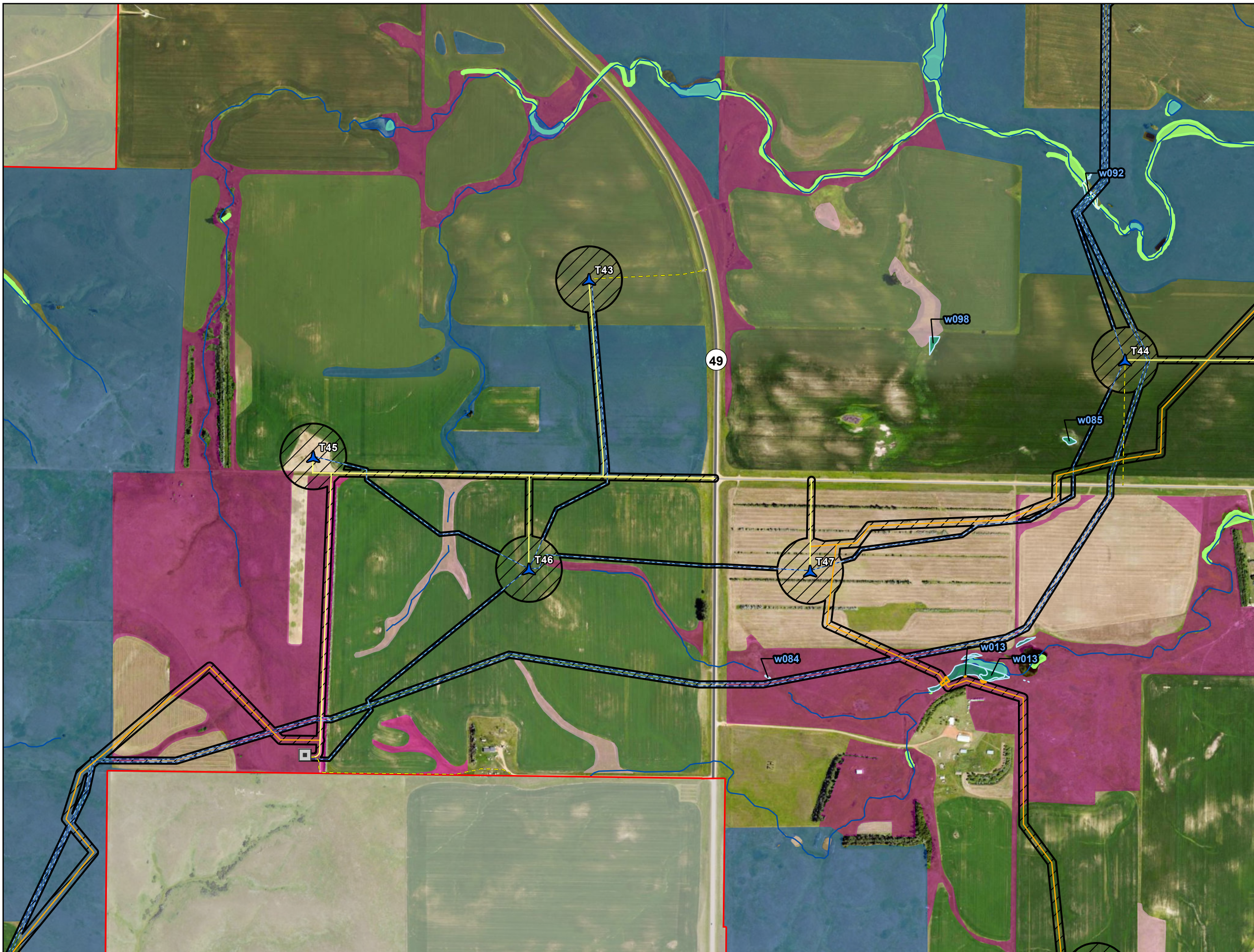
Wetlands/Waterbodies
Longspur Wind Energy Center
 Morton County, North Dakota

Page 6 of 15

merjent.

For Environmental Review Purposes Only

Date: (5/4/2026) Source: Z:\Clients\W_P\W\Power\Longspur_Wind\ArcGIS\Permitting\FSC\PSC_Testimony\Longspur_Wind_PSC_Testimony.aprx



- ▭ Project Area
- ▭ Construction Easement
- ▲ Primary Turbine
- ▭ ADLS Radar Tower
- Primary Access Road
- Alternate Access Road
- Primary Crane Path
- Collection Line
- DASK Habitat
- ▭ County Boundary
- Wetlands/Waterbodies**
- Delineated Waterway
- Delineated Wetland
- NHD Waterbody
- NHD Waterway
- NWI Wetland
- Wetland Impact**
- Temporary
- Grassland Sod Type**
- Broken Grassland
- Broken Grassland (Desktop)
- Broken Grassland (Previous Survey)
- Unbroken Grassland
- Unbroken Grassland (Desktop)

Wetlands/Waterbodies

Longspur Wind Energy Center

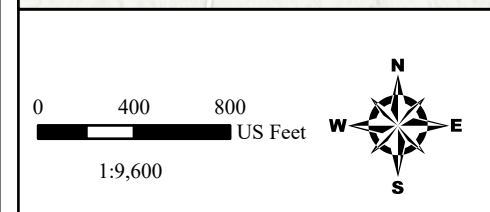
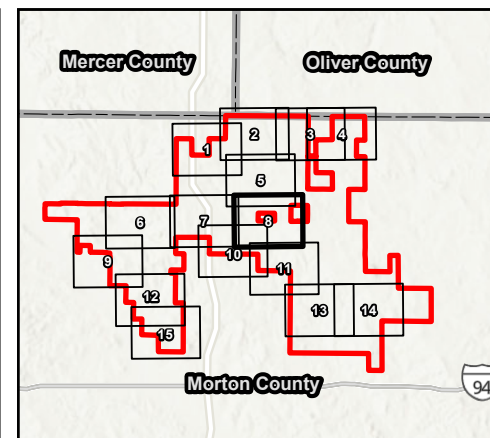
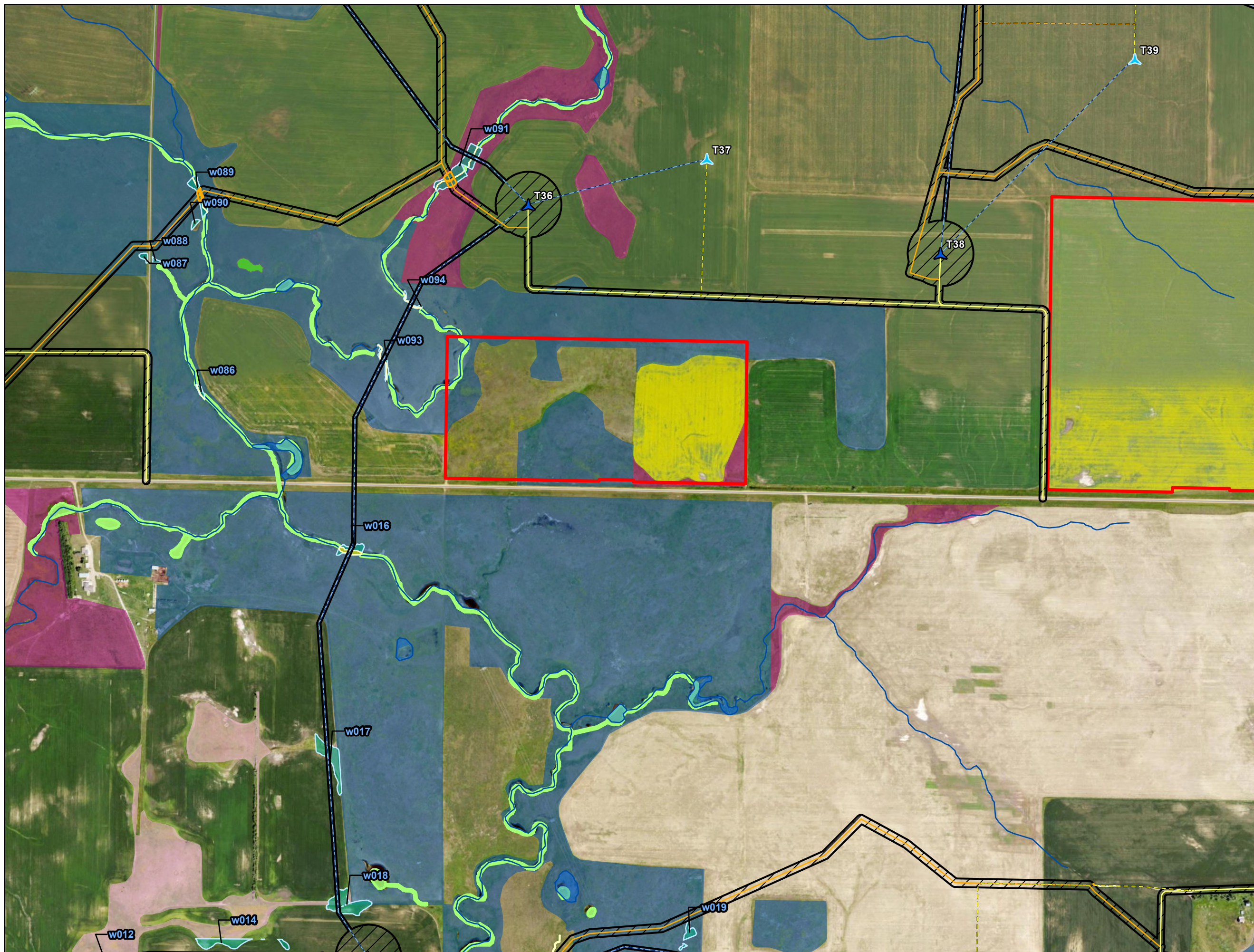
Morton County, North Dakota

Page 7 of 15

merjent.

For Environmental Review Purposes Only

Date: (5/4/2026) Source: Z:\Clients\W_P\W\Power\Longspur_Wind\ArcGIS\Permitting\PS\CIPSC_Testsimony\Longspur_Wind_PSC_Testsimony.aprx



- ▭ Project Area
 - Construction Easement
 - ▲ Primary Turbine
 - ▲ Alternate Turbine
 - Primary Access Road
 - Alternate Access Road
 - Primary Crane Path
 - Alternate Crane Path
 - Collection Line
 - DASK Habitat
 - County Boundary
- Wetlands/Waterbodies**
- Delineated Waterway
 - Delineated Wetland
 - NHD Waterbody
 - NHD Waterway
 - NWI Wetland
- Wetland Impact**
- Temporary Waterbody Impact
 - Temporary Wetland Impact
- Grassland Sod Type**
- Broken Grassland
 - Broken Grassland (Previous Survey)
 - Unbroken Grassland
 - Unbroken Grassland (Previous Survey)

Wetlands/Waterbodies

Longspur Wind Energy Center

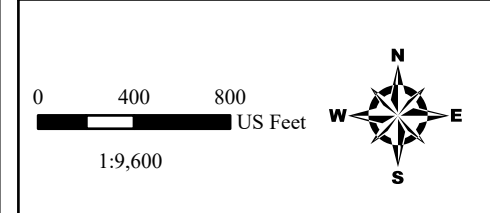
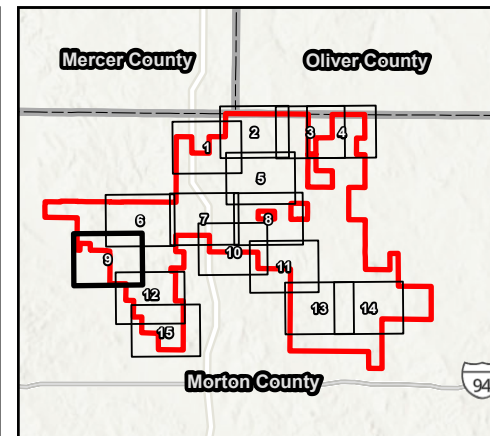
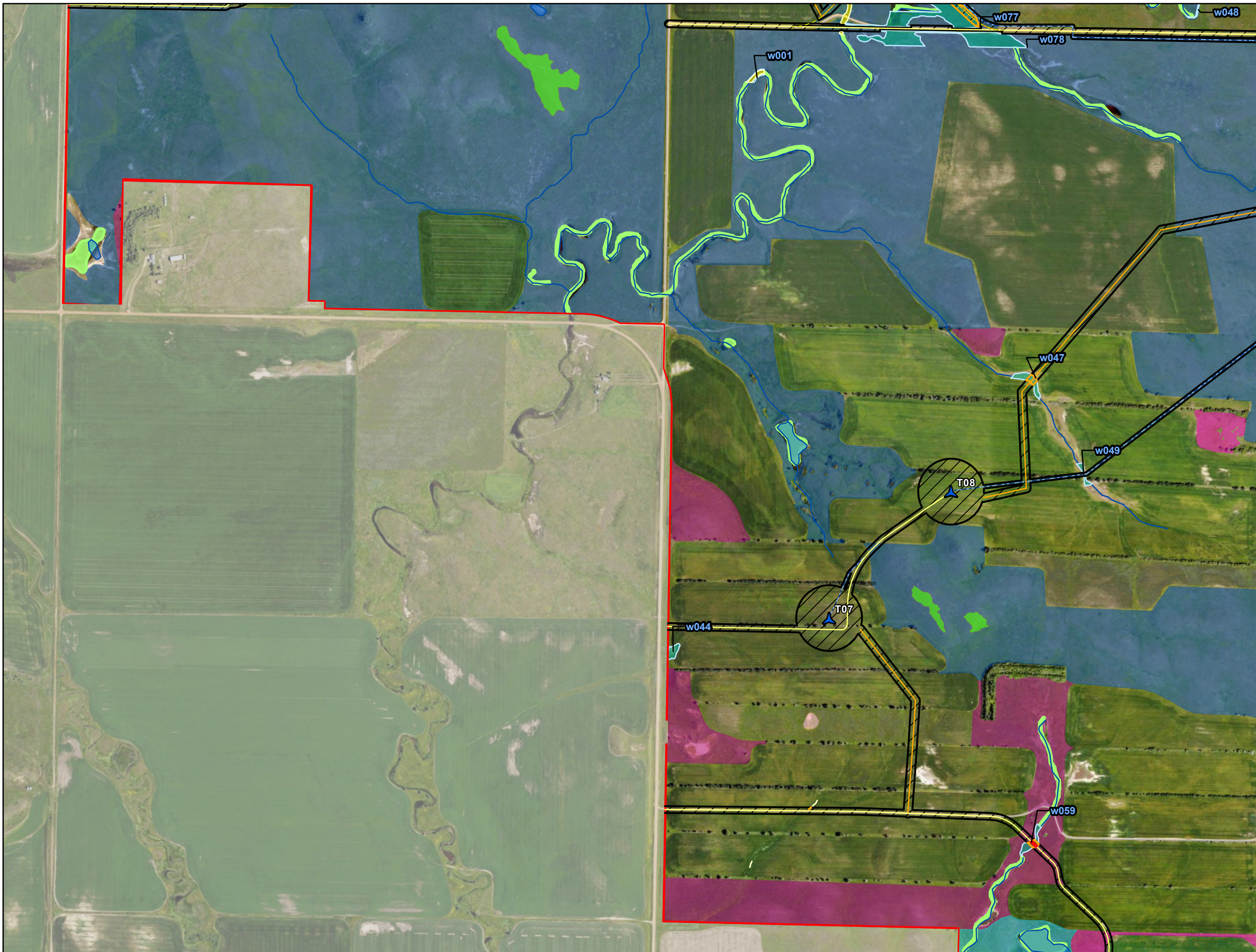
Morton County, North Dakota

Page 8 of 15

merjent.

For Environmental Review Purposes Only

Date: (5/4/2026) Source: Z:\Clients\W_P\W\Power\Longspur_Wind\ArcGIS\Permitting\PS\CIP\SC_Testimony\Longspur_Wind_PSC_Testimony.aprx



- Project Area
 - Construction Easement
 - ▲ Primary Turbine
 - Primary Access Road
 - Alternate Access Road
 - Primary Crane Path
 - Collection Line
 - DASK Habitat
 - County Boundary
- Wetlands/Waterbodies**
- Delineated Waterway
 - Delineated Wetland
 - NHD Waterbody
 - NHD Waterway
 - NWI Wetland
- Wetland Impact**
- Temporary
 - Permanent
- Waterbody Impact**
- Temporary
- Grassland Sod Type**
- Broken Grassland
 - Broken Grassland (Desktop)
 - Broken Grassland (Previous Survey)
 - Unbroken Grassland
 - Unbroken Grassland (Desktop)

Wetlands/Waterbodies

Longspur Wind Energy Center

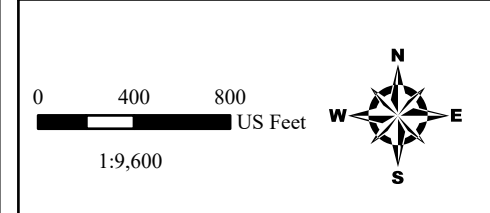
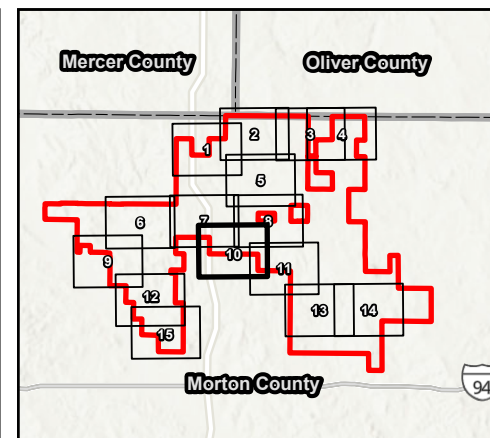
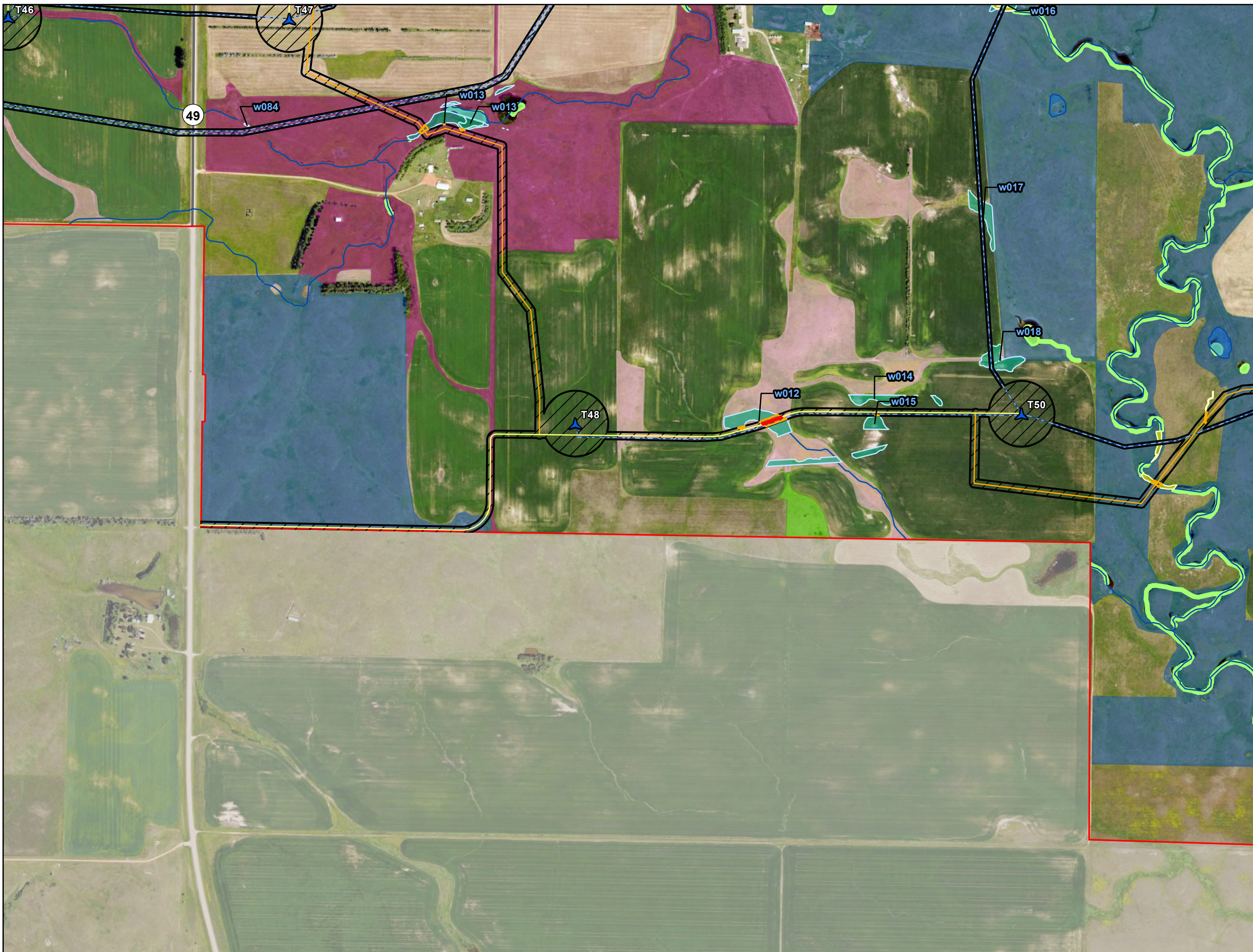
Morton County, North Dakota

Page 9 of 15

merjent.

For Environmental Review Purposes Only

Date: (5/4/2026) Source: Z:\Clients\W_P\W\Power\Longspur_Wind\ArcGIS\Permitting\PS\CIPSC_Testimony\Longspur_Wind_PSC_Testimony.aprx



- Project Area
- Construction Easement
- ▲ Primary Turbine
- Primary Access Road
- Primary Crane Path
- Collection Line
- DASK Habitat
- County Boundary
- Wetlands/Waterbodies**
- Delineated Waterway
- Delineated Wetland
- NHD Waterbody
- NHD Waterway
- NWI Wetland
- Wetland Impact**
- Temporary
- Permanent
- Waterbody Impact**
- Temporary
- Grassland Sod Type**
- Broken Grassland
- Broken Grassland (Previous Survey)
- Unbroken Grassland
- Unbroken Grassland (Previous Survey)

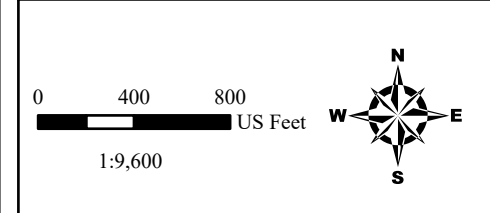
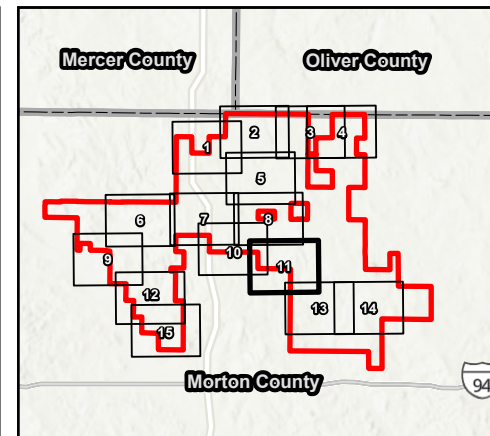
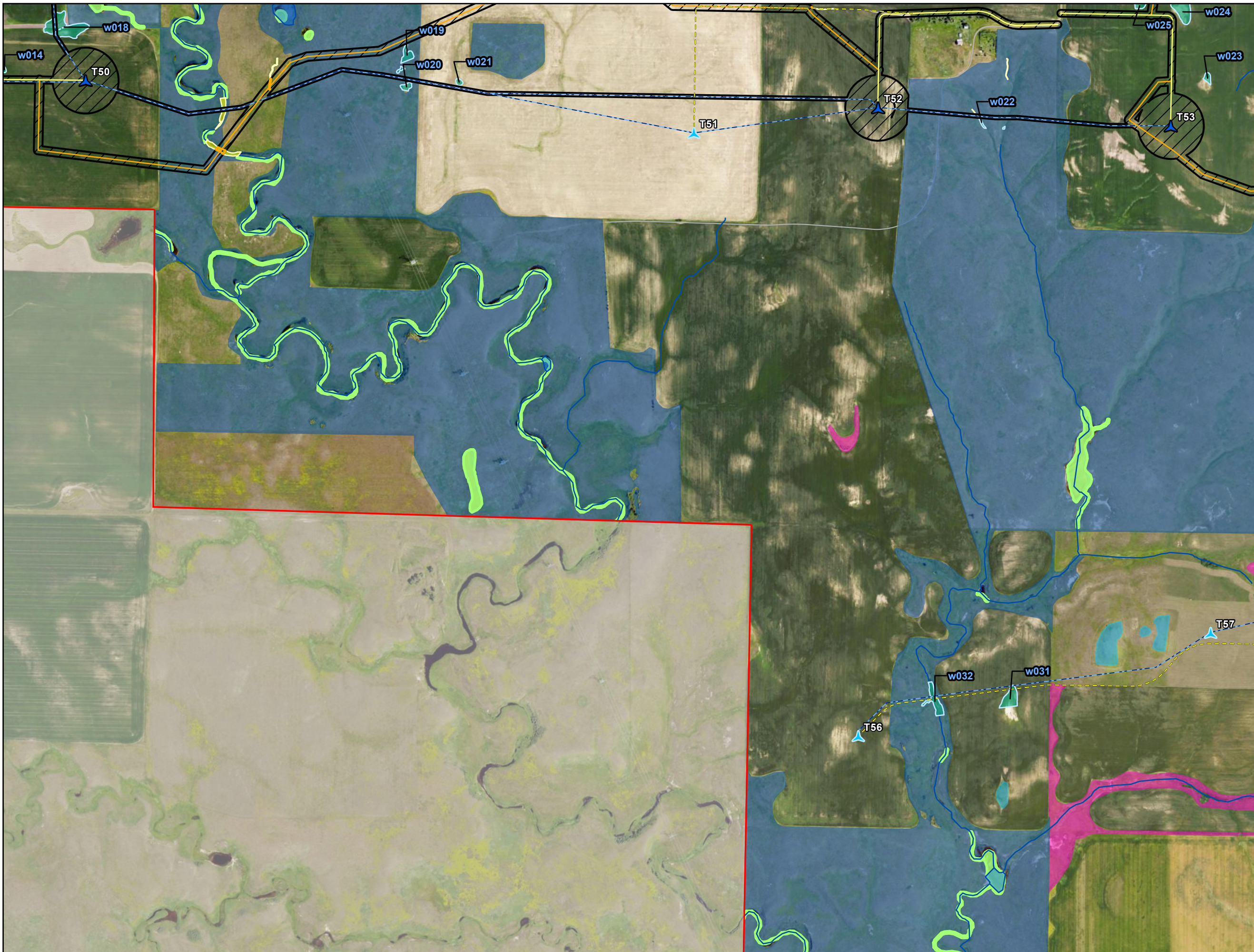
Wetlands/Waterbodies
Longspur Wind Energy Center
 Morton County, North Dakota

Page 10 of 15

merjent

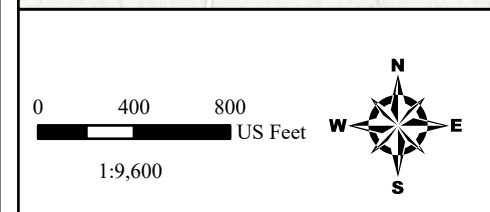
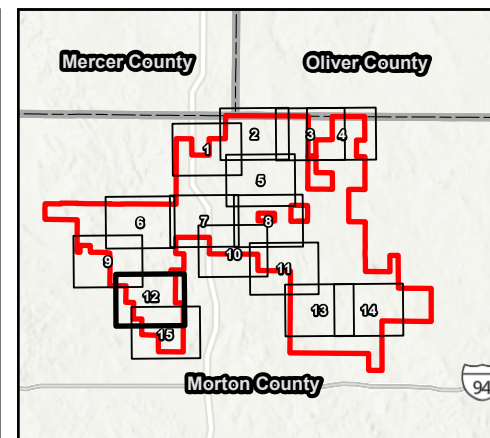
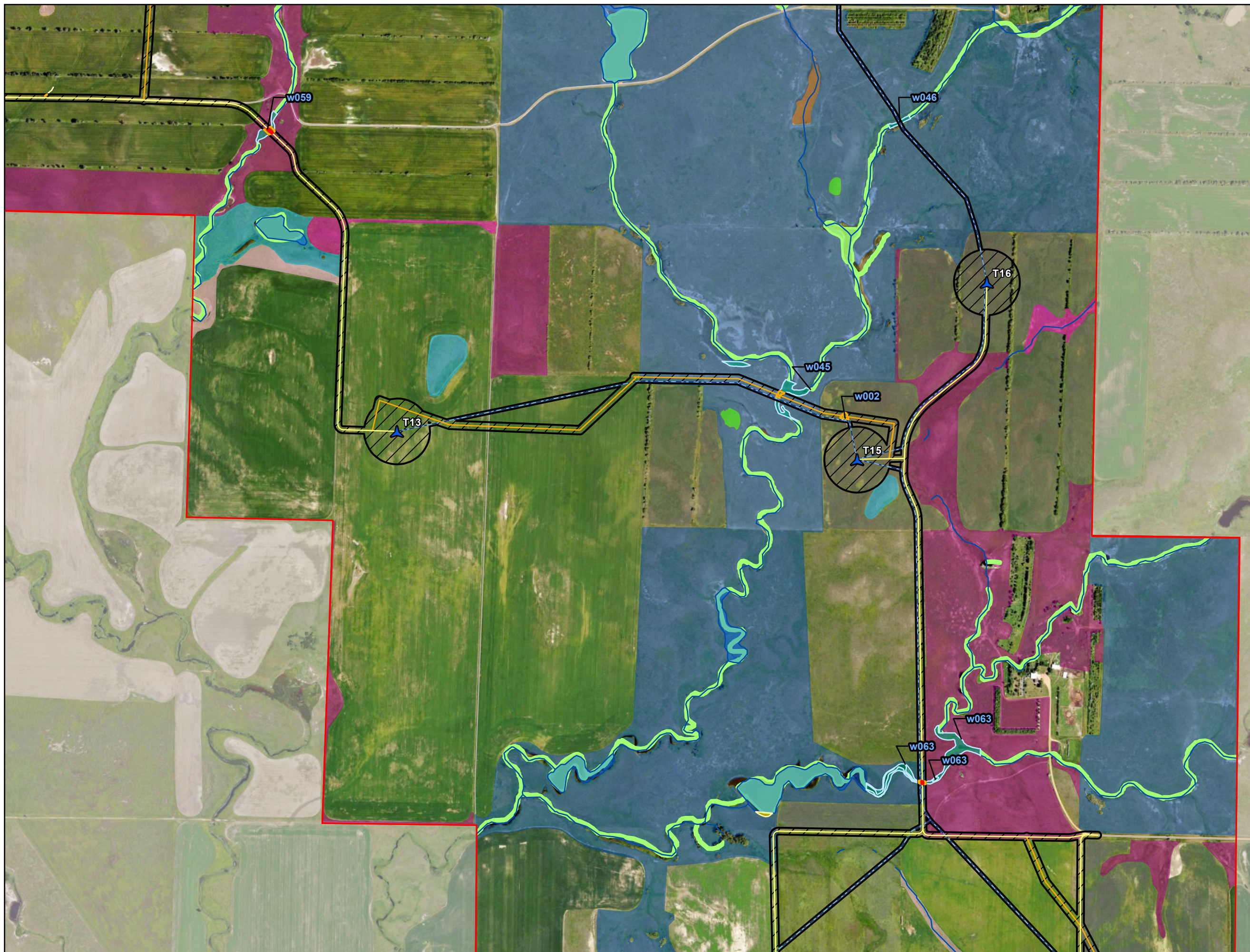
For Environmental Review Purposes Only

Date: (5/4/2026) Source: Z:\Clients\W_P\W\Power\Longspur_Wind\ArcGIS\Permitting\PS\PS_C\PS_C_Testsimony\Longspur_Wind_PSC_Testsimony.aprx



- ▭ Project Area
- Construction Easement
- ▲ Primary Turbine
- ▲ Alternate Turbine
- Primary Access Road
- Alternate Access Road
- Primary Crane Path
- Collection Line
- ▭ DASK Habitat
- County Boundary
- Wetlands/Waterbodies**
- Delineated Waterway
- Delineated Wetland
- NHD Waterbody
- NHD Waterway
- NWI Wetland
- Waterbody Impact**
- Temporary
- Grassland Sod Type**
- ▭ Broken Grassland (Desktop)
- ▭ Broken Grassland (Previous Survey)
- ▭ Unbroken Grassland
- ▭ Unbroken Grassland (Desktop)

Date: (5/4/2026) Source: Z:\Clients\W_P\W\Power\Longspur_Wind\ArcGIS\Permitting\PS\CIPSC_Testsimony\Longspur_Wind_PSC_Testsimony.aprx



- Project Area
- Construction Easement
- ▲ Primary Turbine
- Primary Access Road
- Primary Crane Path
- Collection Line
- DASK Habitat
- County Boundary
- Wetlands/Waterbodies**
- Delineated Waterway
- Delineated Wetland
- NHD Waterbody
- NHD Waterway
- NWI Wetland
- Wetland Impact**
- Temporary
- Permanent
- Waterbody Impact**
- Temporary
- Grassland Sod Type**
- Broken Grassland
- Broken Grassland (Desktop)
- Broken Grassland (Previous Survey)
- Unbroken Grassland
- Unbroken Grassland (Desktop)

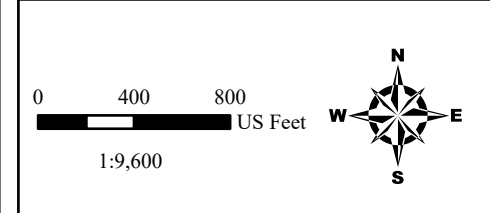
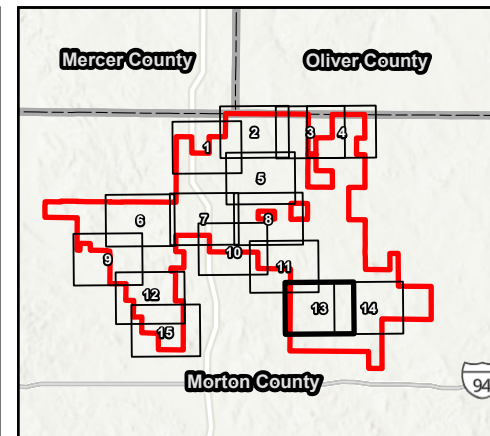
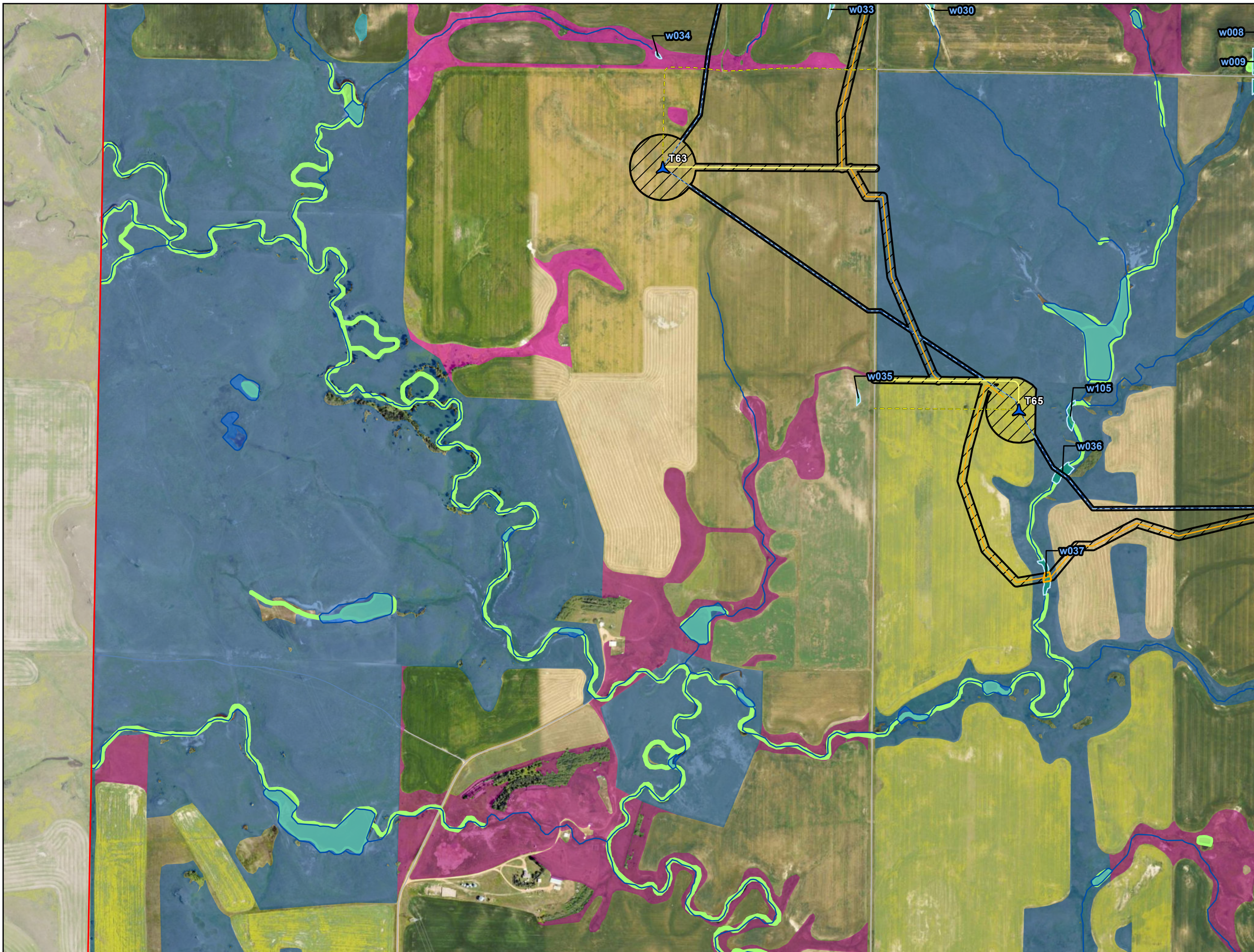
Wetlands/Waterbodies
Longspur Wind Energy Center
 Morton County, North Dakota

Page 12 of 15

merjent.

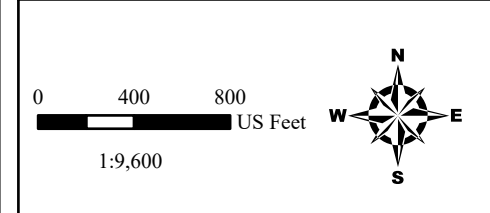
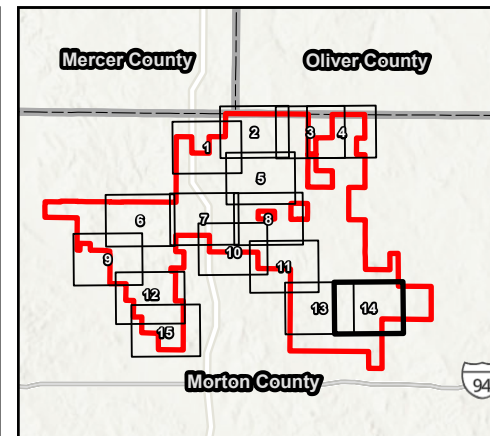
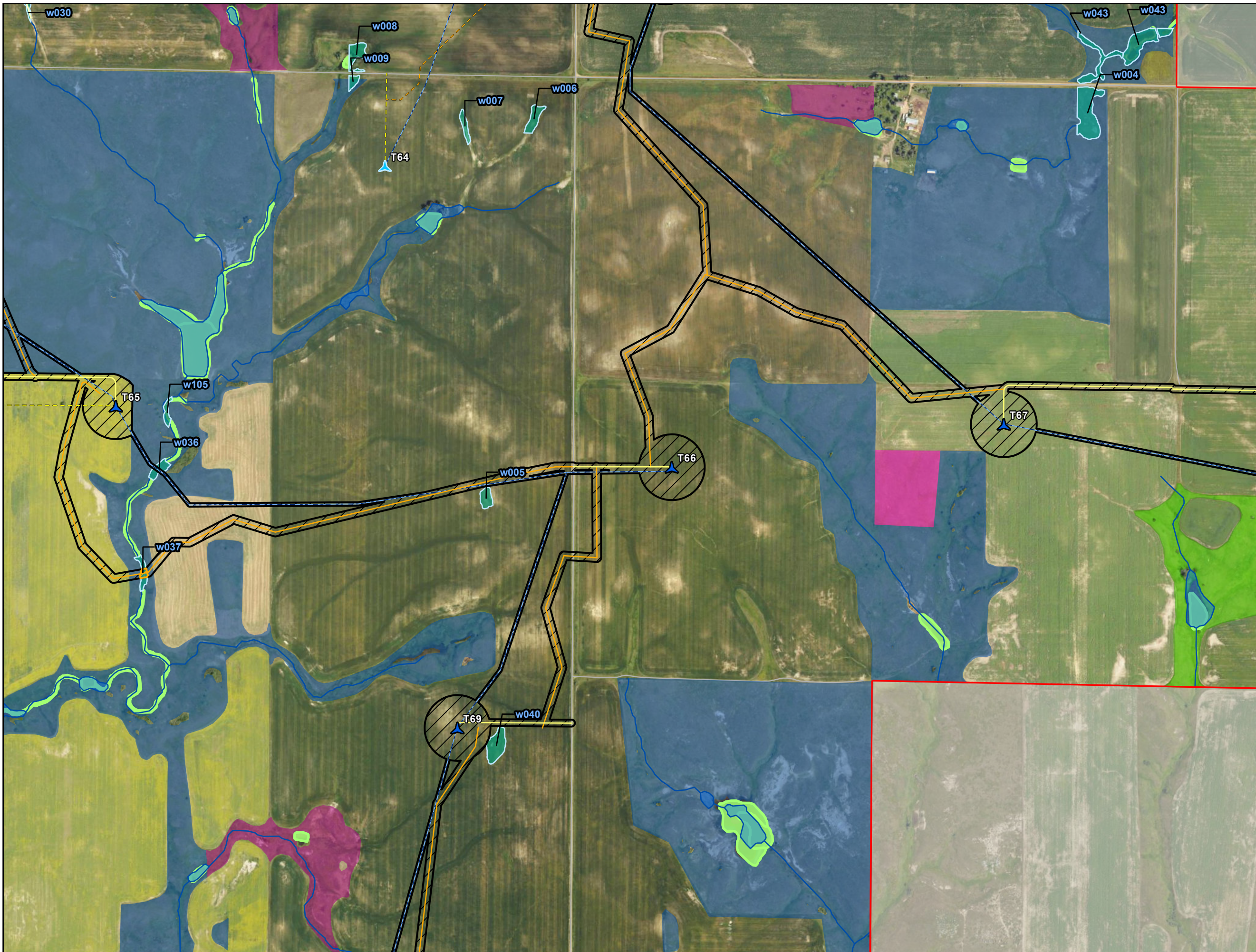
For Environmental Review Purposes Only

Date: (5/4/2026) Source: Z:\Clients\W_P\W\Power\Longspur_Wind\ArcGIS\Permitting\PS\CIPSC_Testimony\Longspur_Wind_PSC_Testimony.aprx



- Project Area
- Construction Easement
- ▲ Primary Turbine
- Primary Access Road
- Alternate Access Road
- Primary Crane Path
- Collection Line
- DASK Habitat
- County Boundary
- Wetlands/Waterbodies**
- Delimited Waterway
- Delimited Wetland
- NHD Waterbody
- NHD Waterway
- NWI Wetland
- Wetland Impact**
- Temporary
- Grassland Sod Type**
- Broken Grassland
- Broken Grassland (Desktop)
- Unbroken Grassland
- Unbroken Grassland (Desktop)

Date: (5/4/2026) Source: Z:\Clients\W_P\W\Power\Longspur_Wind\ArcGIS\Permitting\PS\CIPSC_Testsimony\Longspur_Wind_PSC_testimony.aprx



- Project Area
- Construction Easement
- ▲ Primary Turbine
- ▲ Alternate Turbine
- Primary Access Road
- Alternate Access Road
- Primary Crane Path
- Alternate Crane Path
- Collection Line
- DASK Habitat
- County Boundary
- Wetlands/Waterbodies**
- Delineated Waterway
- Delineated Wetland
- NHD Waterbody
- NHD Waterway
- NWI Wetland
- Wetland Impact**
- Temporary
- Grassland Sod Type**
- Broken Grassland
- Broken Grassland (Desktop)
- Unbroken Grassland
- Unbroken Grassland (Previous Survey)

Wetlands/Waterbodies

Longspur Wind Energy Center

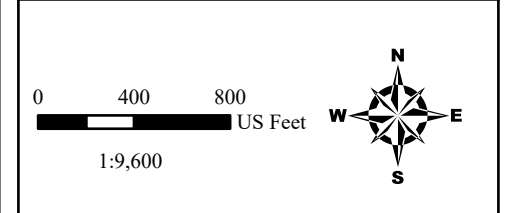
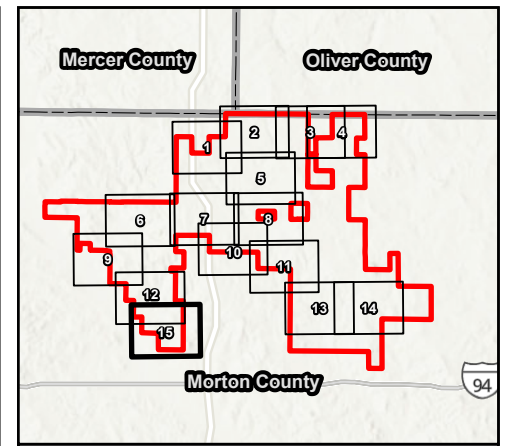
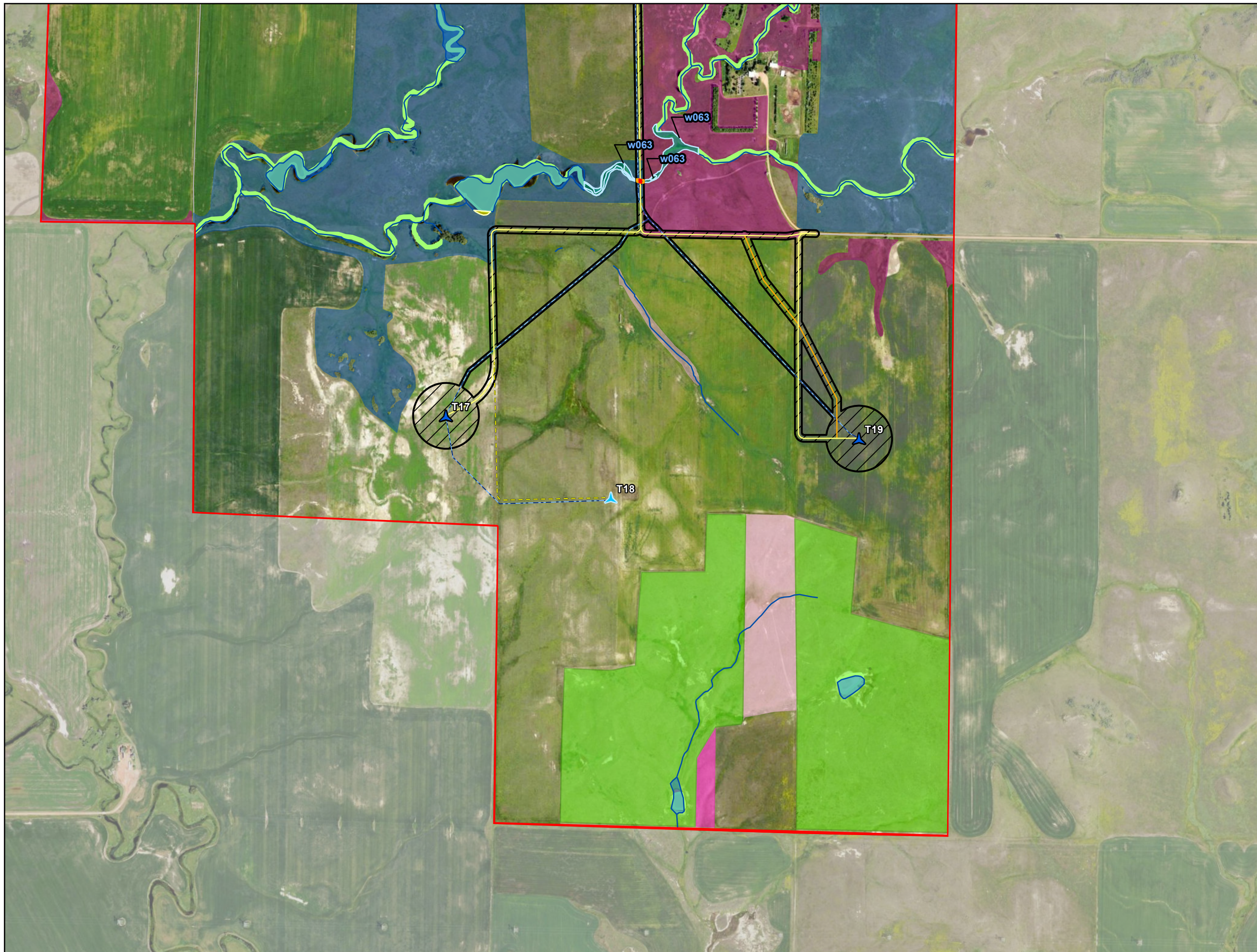
Morton County, North Dakota

Page 14 of 15

merjent.

For Environmental Review Purposes Only

Date: (5/4/2026) Source: Z:\Clients\W_P\W\Power\Longspur_Wind\ArcGIS\Permitting\PS\CIPSC_Testsimony\Longspur_Wind_PSC_Testsimony.aprx



- Project Area
 - Construction Easement
 - ▲ Primary Turbine
 - ▲ Alternate Turbine
 - Primary Access Road
 - Alternate Access Road
 - Primary Crane Path
 - Collection Line
 - DASK Habitat
 - County Boundary
- Wetlands/Waterbodies**
- Delineated Waterway
 - Delineated Wetland
 - NHD Waterbody
 - NHD Waterway
 - NWI Wetland
- Wetland Impact**
- Temporary
 - Permanent
- Grassland Sod Type**
- Broken Grassland
 - Broken Grassland (Desktop)
 - Broken Grassland (Previous Survey)
 - Unbroken Grassland
 - Unbroken Grassland (Previous Survey)

Wetlands/Waterbodies

Longspur Wind Energy Center

Morton County, North Dakota

Page 15 of 15

merjent

For Environmental Review Purposes Only

Date: (5/4/2026) Source: Z:\Clients\W_P\W\Power\Longspur_Wind\ArcGIS\Permitting\PS\CIPSC_Testimony\Longspur_Wind_PSC_Testimony.aprx